


Installing and Upgrading R

ISA R Workshop
4.3.2010

All rights reserved- Department of Statistics and Operations Research, TAU

Installing under Windows

<http://cran.r-project.org/>



All rights reserved- Department of Statistics and Operations Research, TAU

Base



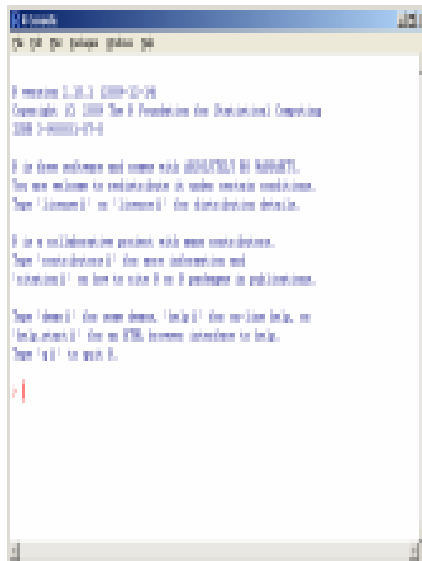
All rights reserved- Department of Statistics and Operations Research, TAU

Download and installation instructions



All rights reserved- Department of Statistics and Operations Research, TAU

Done



All rights reserved- Department of Statistics and Operations Research, TAU

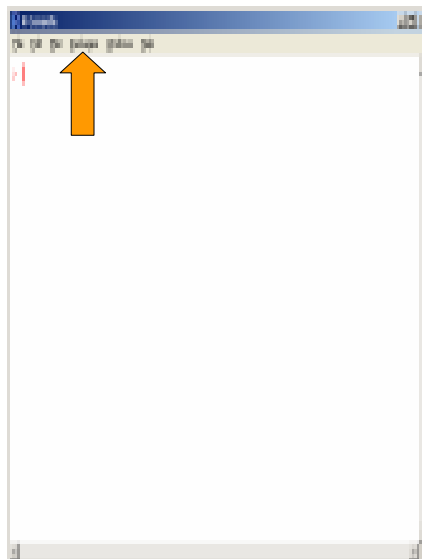
Packages

2186 packages!

<http://cran.r-project.org/web/packages/>

```
install.packages(  
  + 'package.name' )
```

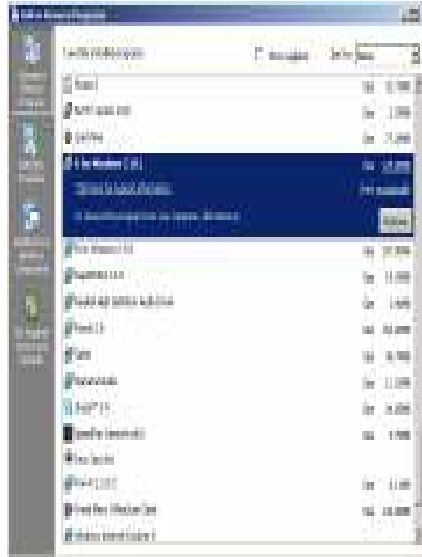
```
update.packages ( )
```



All rights reserved- Department of Statistics and Operations Research, TAU

Updating under Windows

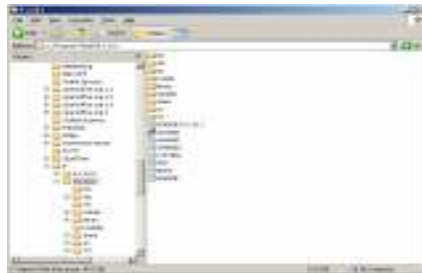
- Why should I update?
- Remove old version (optional).
- Install new version.



All rights reserved- Department of Statistics and Operations Research, TAU

In "C:\Program Files\R\R-..."

- Manually move "library" directory.
- From console:
`update.packages()`



All rights reserved- Department of Statistics and Operations Research, TAU

Installing under Linux

- Cran→Linux



All rights reserved- Department of Statistics and Operations Research, TAU

Ubuntu

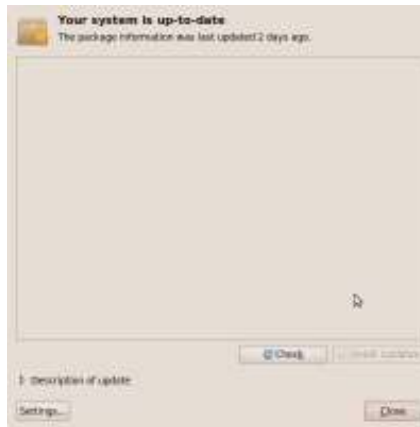
- In
/etc/apt/sources.list
Add
deb http://<my.favorite.cran.mirror>/bin/linux/ubuntu karmic/
- Key ID:
gpg --keyserver subkeys.pgp.net --recv-key E2A11821
gpg -a --export E2A11821 | sudo apt-key add -



All rights reserved- Department of Statistics and Operations Research, TAU

Updating under Linux

```
ssh$  
  Sudo apt-get update  
  
R>  
  update.packages( )
```



All rights reserved- Department of Statistics and Operations Research, TAU